

**CATALOGO GENERALE**  
general catalog

**2021**

# AUTOROTOR

---

**Un'azienda con solidissime basi e una vasta esperienza, moderna e proiettata nel futuro: questa è Autorotor.**

Autorotor da oltre quarant'anni è specializzata nella costruzione di tavole rotanti, anelli, manipolatori e macchine basi per i più svariati settori riconducibili all'automazione industriale. L'azienda è composta da oltre cinquanta collaboratori suddivisi in due unità operative distinte: la prima è nella produzione dei componenti, la seconda è dedicata all'assemblaggio e collaudo degli stessi.

L'alta specializzazione e gli elevati standard qualitativi ci permettono di soddisfare qualsiasi richiesta dei clienti con progetti e prodotti "su misura" a seconda delle diverse esigenze.



**A company with very solid and extensive experience, modern and projected into the future: this is Autorotor.**

*For over forty years Autorotor has specialized in the construction of rotary tables, rings, manipulators and basic machines for the most varied sectors related to industrial automation. The company is made up of over fifty collaborators divided into two distinct operating units: production of components, components assembly and test high specialization and high quality standards allow us to satisfy any customer request with "tailor-made" projects and products according to different needs.*

# A modern company, projected into the future



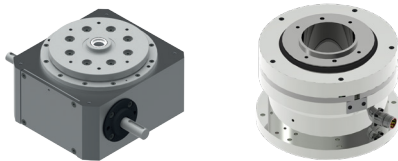
Progettazione, produzione ed assistenza di componenti meccanici per automazione (tavole rotanti, anelli rotanti, intermittenti ed oscillatori ad assi paralleli ed ortogonali, manipolatori, nastri trasportatori, macchine basi). Lavorazioni meccaniche di precisione a CNC conto terzi (IAF 18, 17)



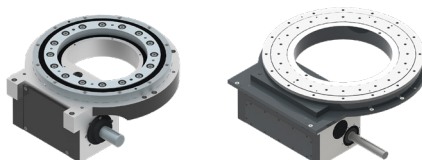
*Design, production and service of mechanical components for automation (rotary index tables, rotary index rings, square axis and parallel axis intermitters and oscillators, manipulators, conveyor belts, base machines).*

*CNC precision machining on behalf of third parties (IAF 18, 17)*

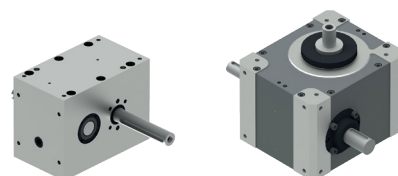
**TAVOLE ROTANTI**  
*Rotary Tables*



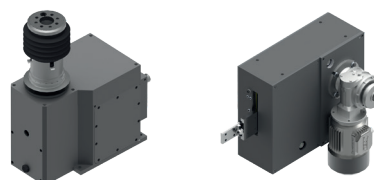
**ANELLI ROTANTI**  
*Rotary rings*



**INTERMITTORI-OSCILLATORI**  
*INTERMITTENTS-OSCILLATING DRIVES*



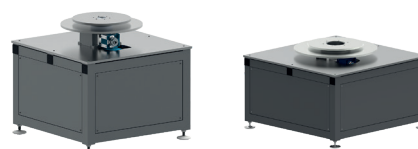
**MANIPOLATORI**  
*Manipulators*



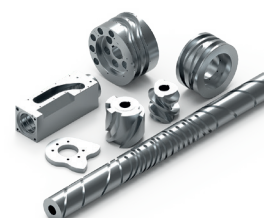
**NASTRI TRASPORTATORI**  
*Conveyor belt*



**MACCHINE BASE**  
*Base machine*



**LAVORAZIONI MECCANICHE**  
*Mechanical processing*



## SERIE 5 *Series 5*

T07 .....	12	T55 .....	32
T10 .....	16	T65 .....	36
T15 .....	20	T75 .....	40
T25 .....	24	T95 .....	44
T35 .....	28	T105 .....	48

## SERIE TK

*Series TK*

TK200 .....	55
TK300 .....	58

6

## SERIE AR *Series AR*

AR350.....	66	AR1600.....	79
AR510.....	72		

## SERIE ARI

*Series ARI*

ARI800.....	84
ARI1200.....	89

62

## SERIE AP-OP *Series AP-OP*

AP-OP40.....	100	AP-OP135... 120
AP-OP55.....	104	AP-OP165... 124
AP-OP70.....	108	AP-OP200... 128
AP-OP85.....	112	AP-OP250... 132
AP-OP110... 116		

## SERIE IT-OT *Series IT-OT*

IT-OT15 .....	140	IT-OT55 .....	149
IT-OT25 .....	143	IT-OT75 .....	152
IT-OT35 .....	146		

94

## SERIE BRMT *Series BRMT*

BRMT2.....	162
BRMT3.....	164

## SERIE BRM *Series BRM*

BRM2.....	166
BRM2S .....	168

## SERIE LM *Series LM*

LM1.....	169
----------	-----

156

## SERIE CB *Series CB*

CB100.....	177
CB200.....	178

174

## SERIE BM *Series BM*

BM1/2/3 .....	182
---------------	-----

## SERIE BMR *Series BMR*

BMR1/2.....	184
-------------	-----

180

192

## I NOSTRI RAPPRESENTANTI E DISTRIBUTORI MONDIALI

*Our main world representatives and distributors*

186

# Rotary index ring

Stazioni Stations	Angoli di camma Cam angles									
	90	120	150	180	210	240	270	300	330	345
2										
4										
6										
8										
12										
16										
24										

 **ANGOLI DI CAMMA REALIZZABILI**  
FEASIBLE CAM TRANSFER ANGLES

## Tolleranza Anelli Rotanti

### Tolerances of indexing rings

#### Tolleranza di ripetibilità

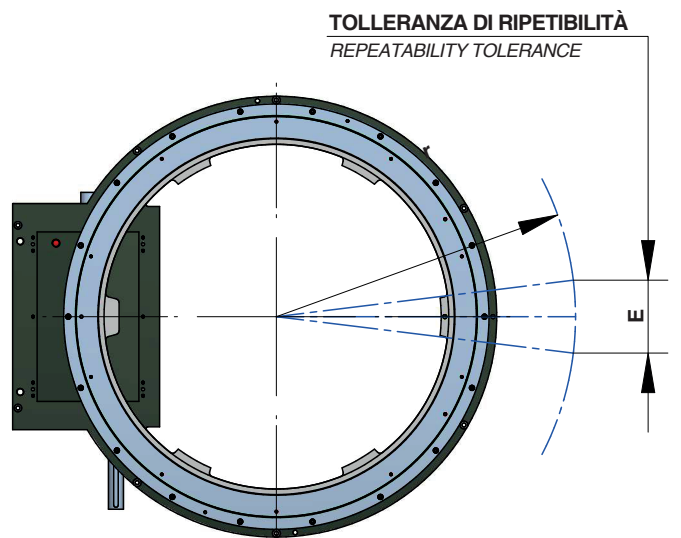
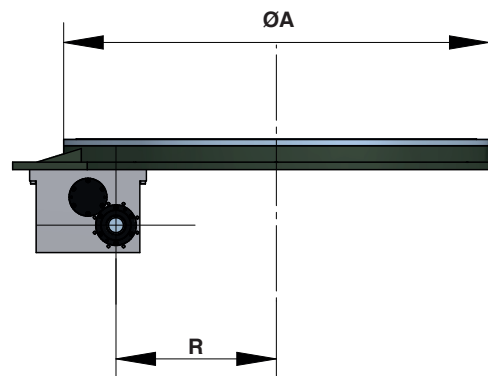
Repeatability tolerance:

- R : 182,5 mm
- EE: ±0,015 mm

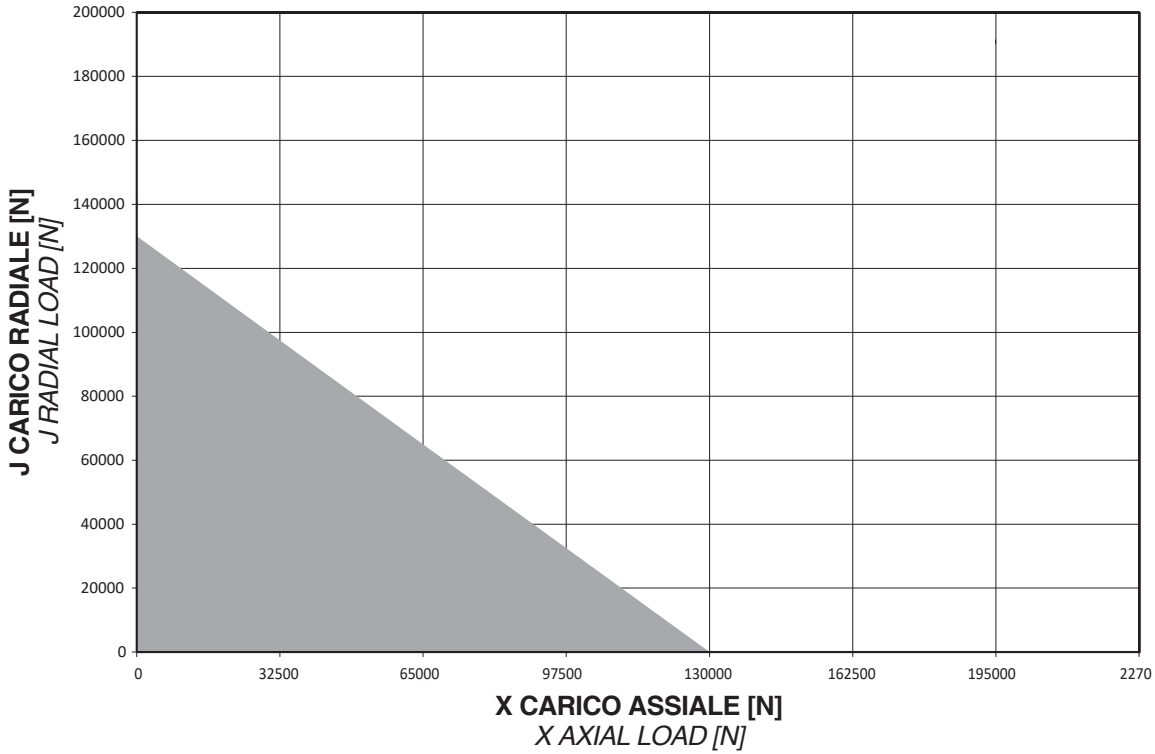
#### Planarità disco/Disc flatness:

- A: 510 mm
- Total: 0,03 mm

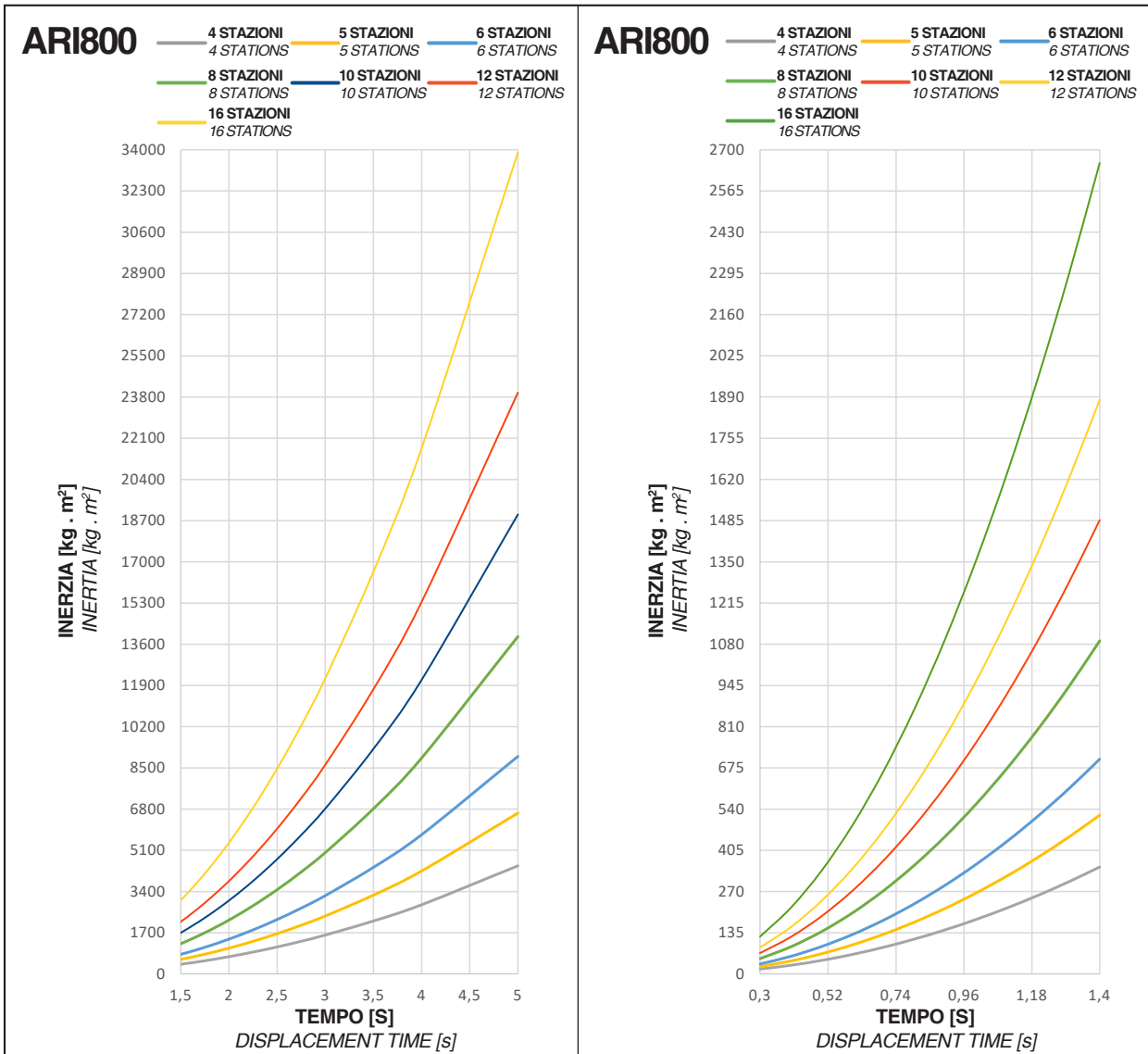
$$E = \frac{r}{R} \times EE = \pm [\text{mm}]$$



# Max axial and radial loads



**ARI800**

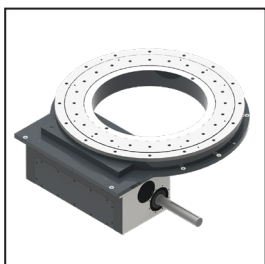
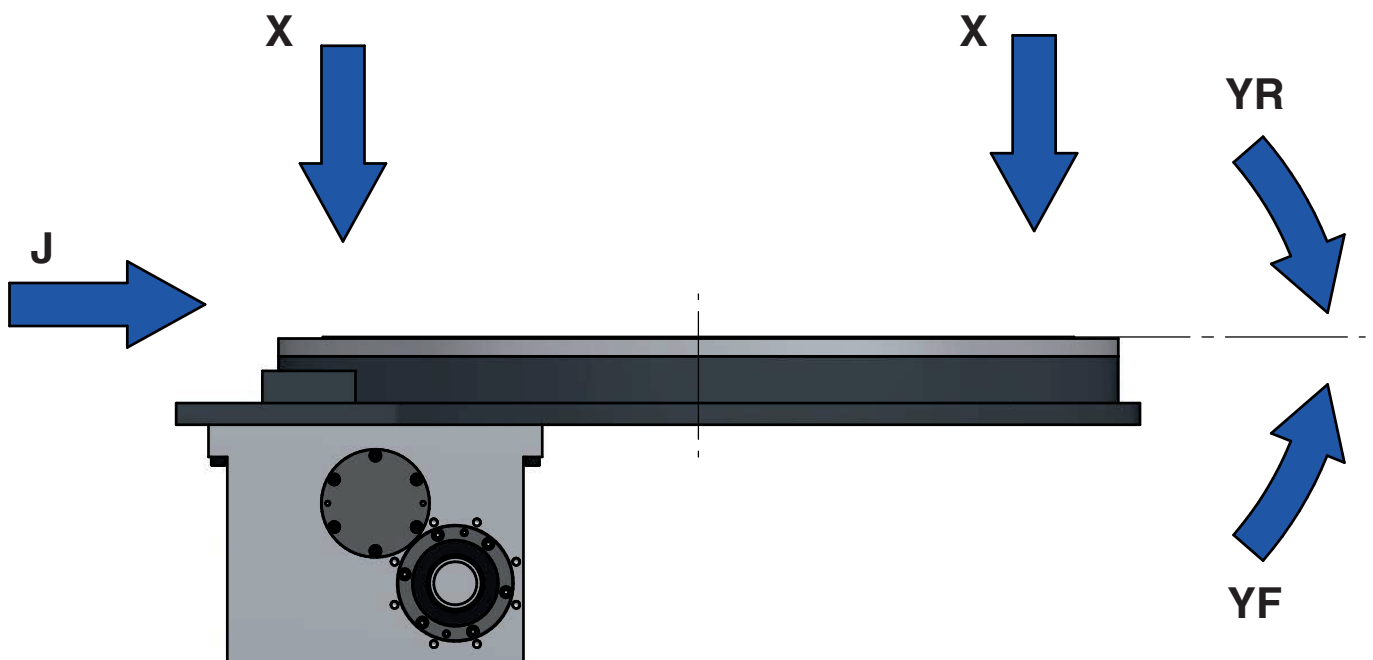


IL GRAFICO È INDICATIVO, PER IDENTIFICARE UN CORRETTO DIMENSIONAMENTO, CONSIGLIAMO DI RICHIEDERE UN CALCOLO DEDICATO AL NOSTRO UFFICIO TECNICO  
 THE GRAPH IS INDICATIVE, TO IDENTIFY A CORRECT SIZING, WE RECOMMEND REQUESTING A DEDICATED CALCULATION FROM OUR TECHNICAL DEPARTMENT

**ROTARY RINGS**

## Axial and radial loads

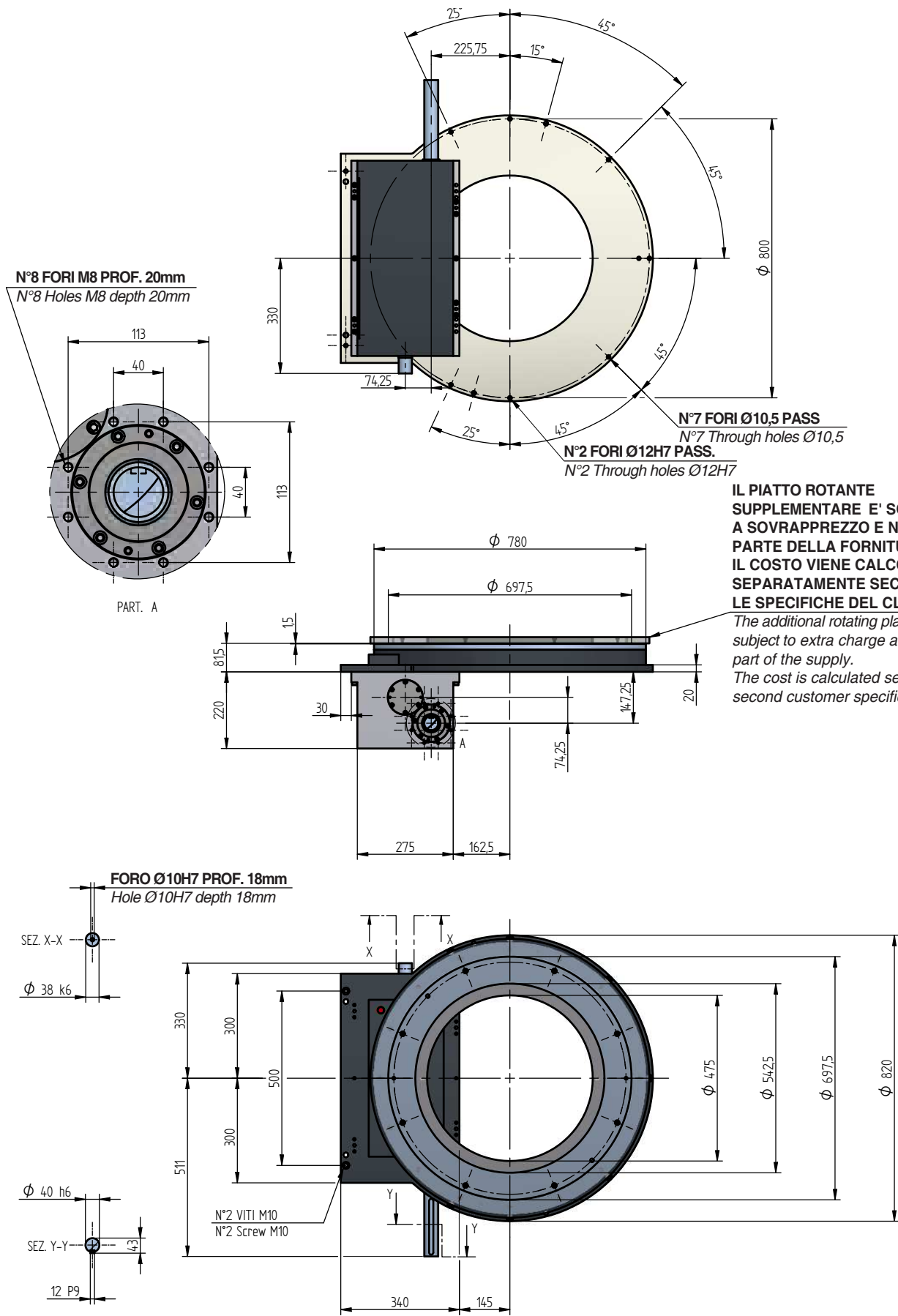
X Carico assiale statico Static axial load	J Carico radiale statico Static radial load	YR Momento ribaltante statico Static overturning torque
N		Nm
130000	130000	17600





# Rotary index ring

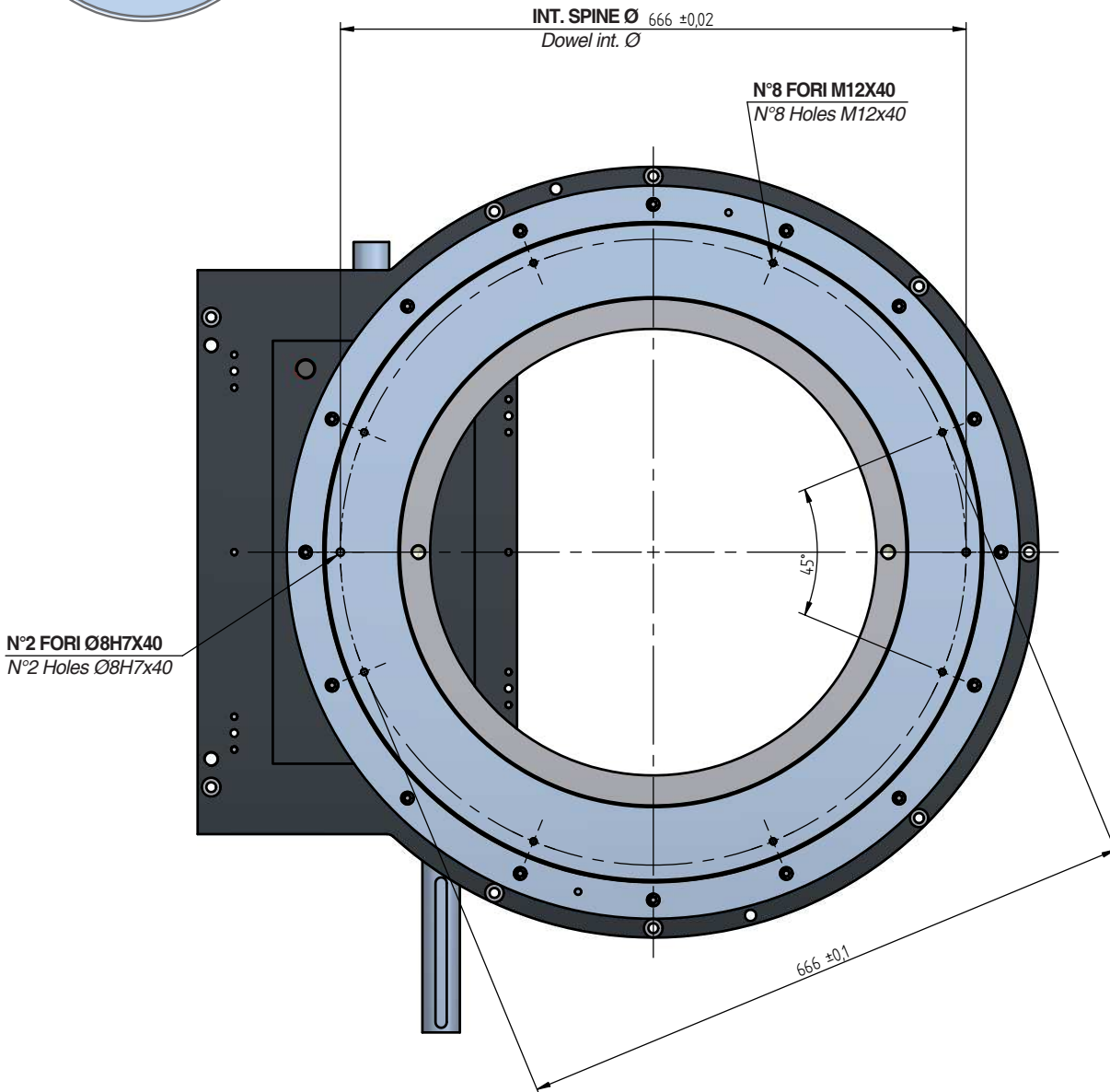
**ARI800**



**KG** 350 kg

# Assembling threaded holes on rotating disk

**FORATURA  
su unità**  
*Drilling holes  
on units*



# Rotary index ring

Stazioni Stations	Angoli di camma Cam angles									
	90	120	150	180	210	240	270	300	330	345
2										
4										
6										
8										
12										
16										
24										

 **ANGOLI DI CAMMA REALIZZABILI**  
FEASIBLE CAM TRANSFER ANGLES

**ARI 1200**

## Tolleranza Anelli Rotanti

### Tolerances of indexing rings

#### Tolleranza di ripetibilità

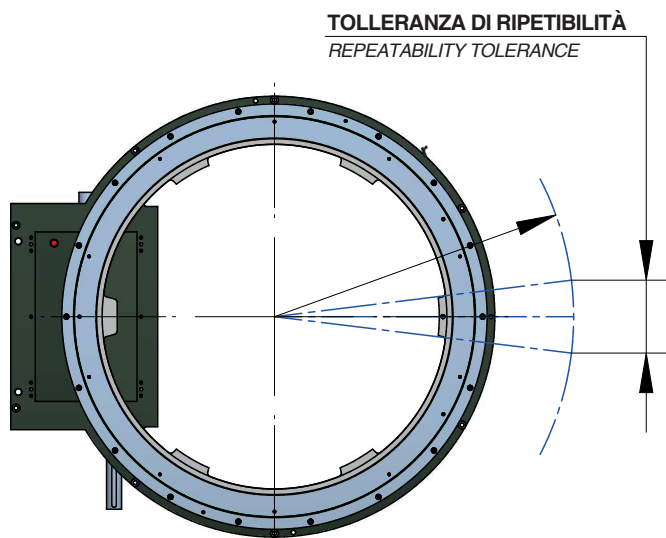
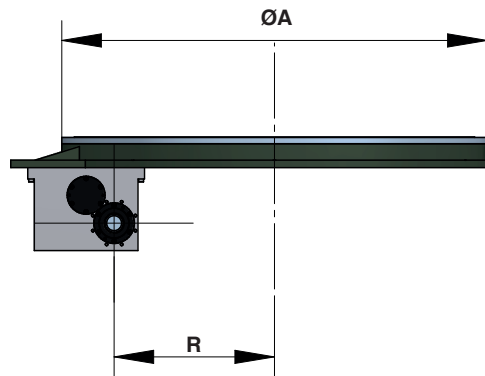
Repeatability tolerance:

- R : 700 mm
- EE: ±0,04 mm

#### Planarità disco/Disc flatness:

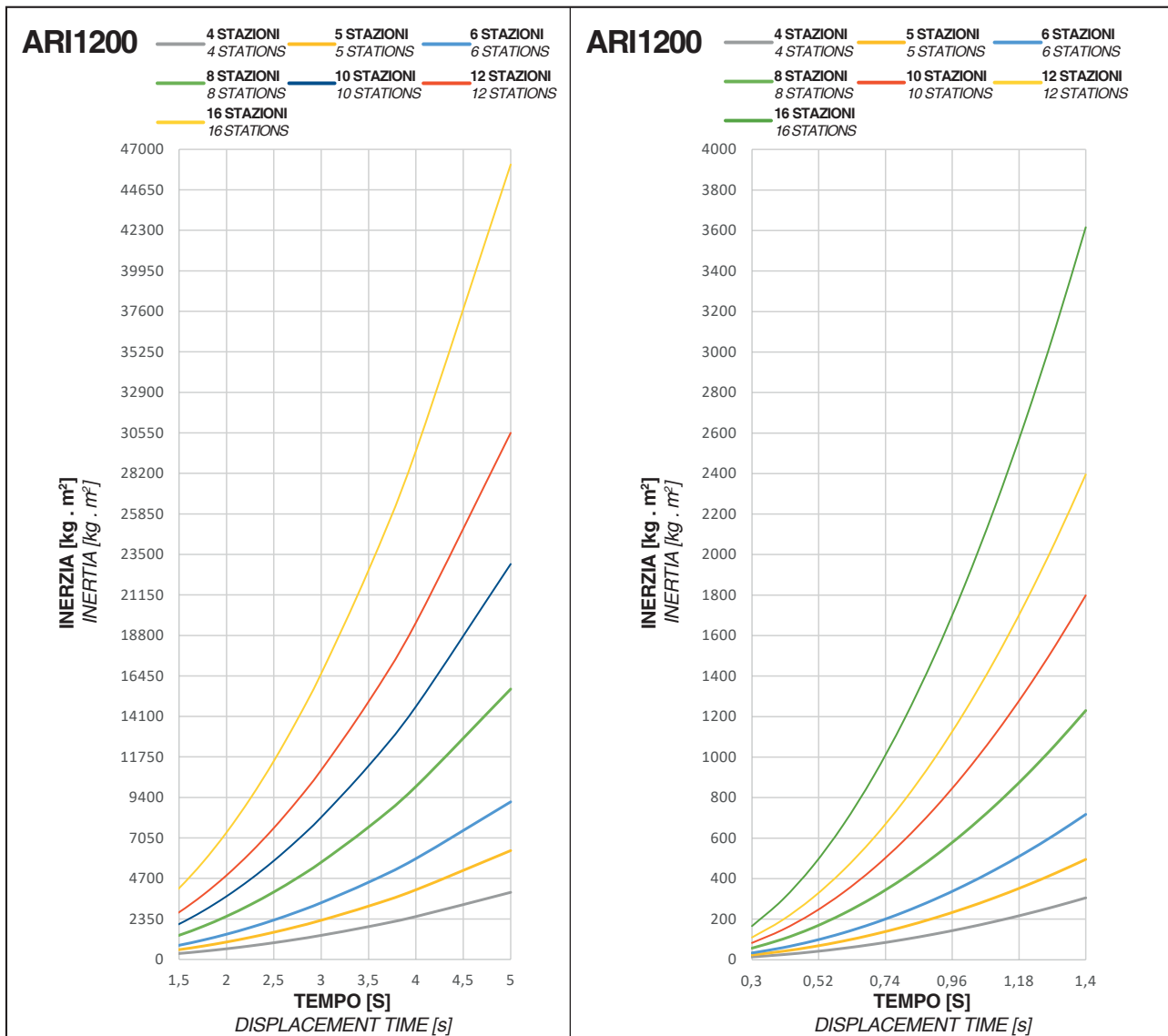
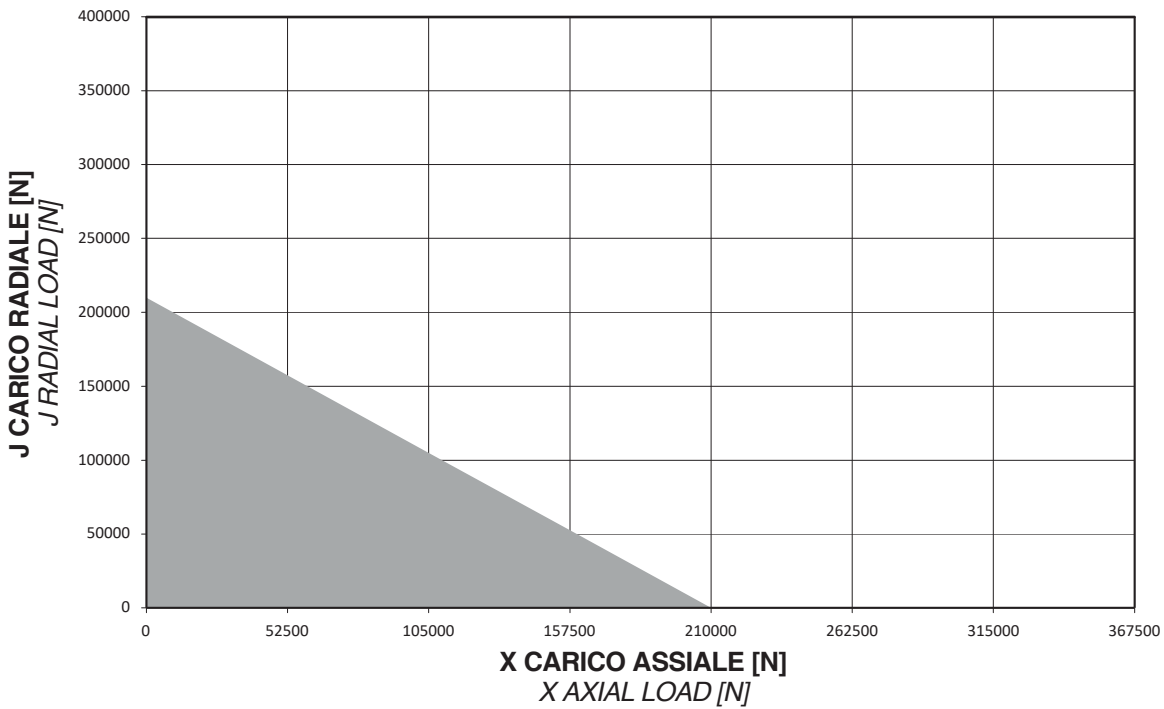
- A: 1600 mm
- Total: 0,07 mm

$$E = \frac{r}{R} \times EE = \pm [\text{mm}]$$



ROTARY RINGS

# Max axial and radial loads

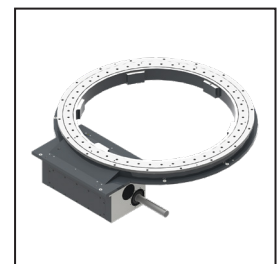
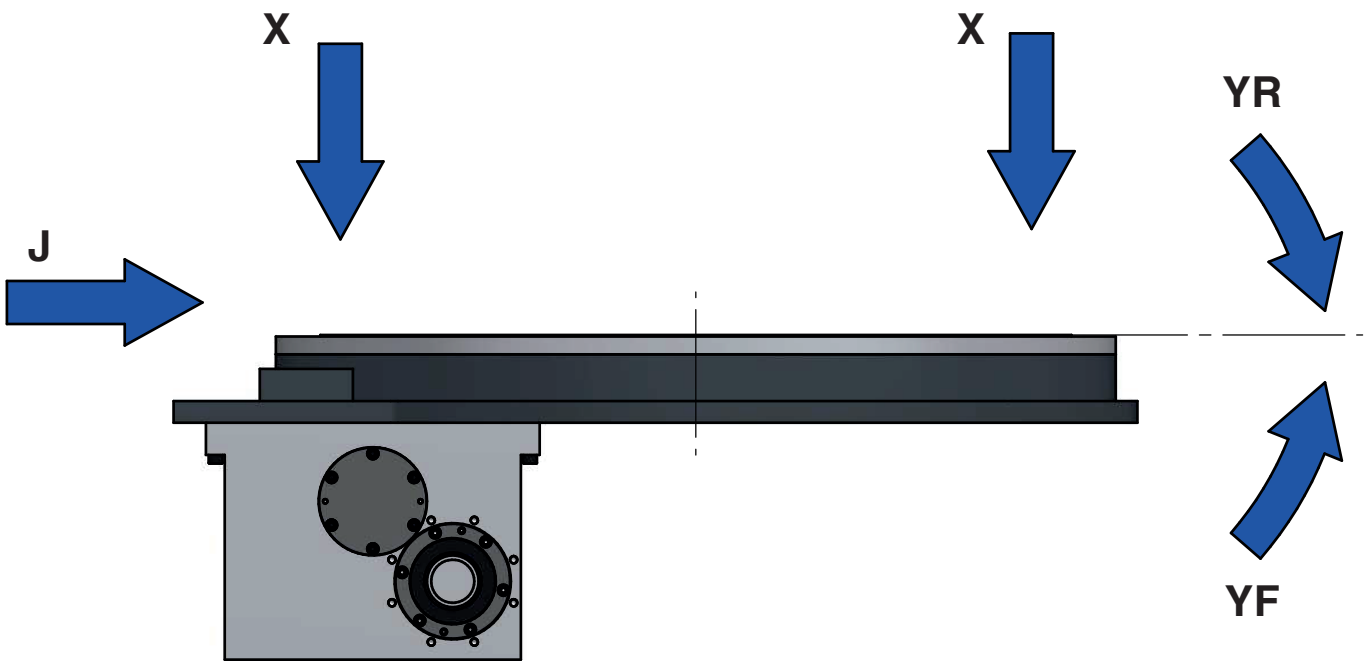


**ANELLI ROTANTI** IL GRAFICO È INDICATIVO, PER IDENTIFICARE UN CORRETTO DIMENSIONAMENTO, CONSIGLIAMO DI RICHIEDERE UN CALCOLO DEDICATO AL NOSTRO UFFICIO TECNICO  
 THE GRAPH IS INDICATIVE, TO IDENTIFY A CORRECT SIZING, WE RECOMMEND REQUESTING A DEDICATED CALCULATION FROM OUR TECHNICAL DEPARTMENT

## Axial and radial loads

<b>X</b> Carico assiale statico Static axial load	<b>J</b> Carico radiale statico Static radial load	<b>YR</b> Momento ribaltante statico Static overturning torque
N		Nm
210000	210000	35000

**ARI 1200**

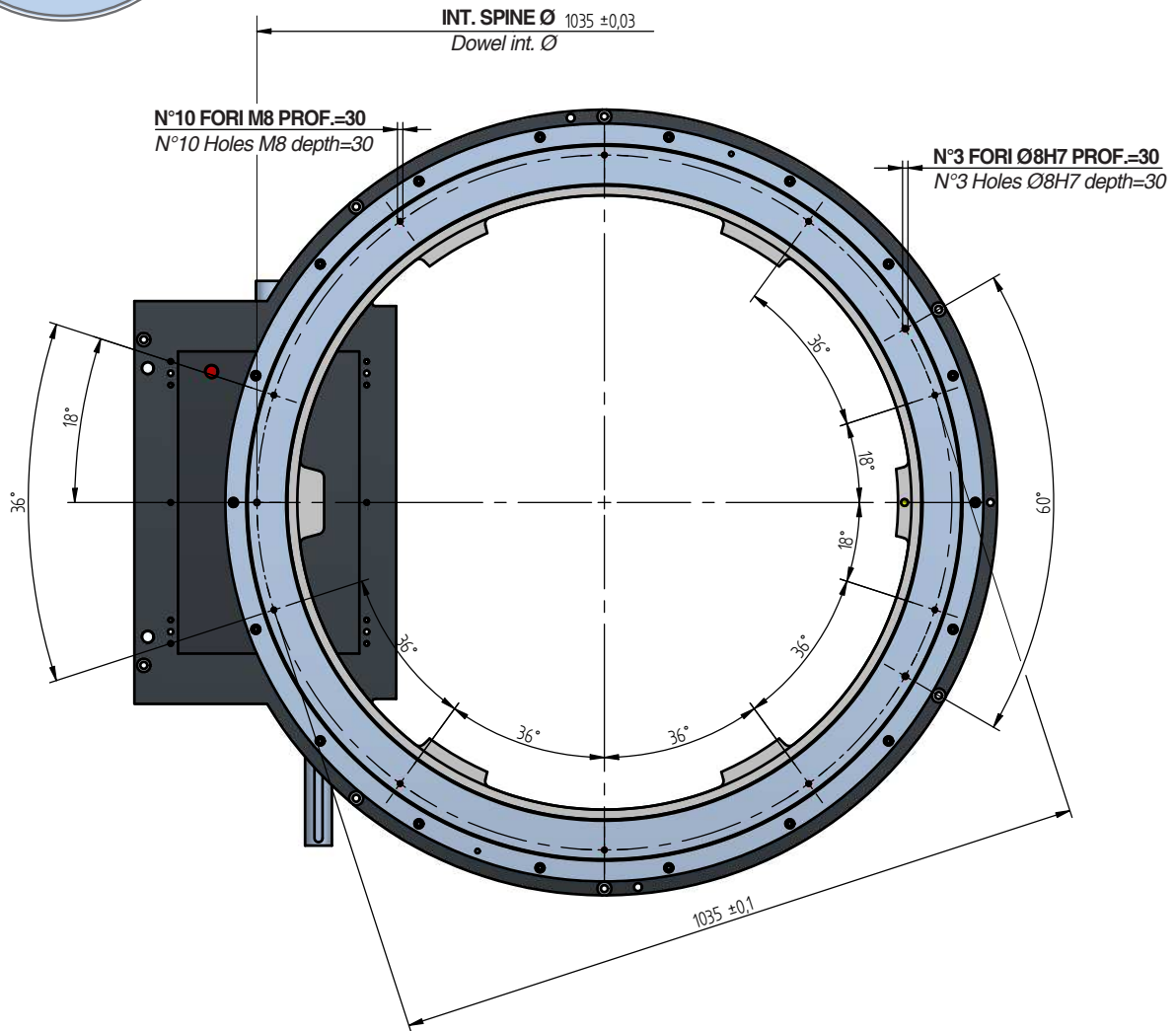


ROTARY RINGS



# Assembling threaded holes on rotating disk

**FORATURA  
su unità**  
*Drilling holes  
on units*



**ARI 1200**



30 Wilson Drive,  
Suite B  
Sparta, NJ 07871  
[info@hexelus.com](mailto:info@hexelus.com)  
(973) 864-4548